

RENUKA EXPORTS PRIVATE LIMITED

FASHION

Post Follia

WWW.RENUKAEXPORTS.COM



ABOUT US

Renuka Exports is a professionally managed garment manufacturer and exporter of high-quality woven apparel. We cater to global clients with trend-focused designs, sustainable quality, and competitive pricing. Our growth is built on consistency, reliability, and long-term partnerships. With a hi-tech, customer-centric, and eco-responsible approach, we ensure compliance with international standards, ethical practices, and sustainable manufacturing.



DIRECTOR'S NOTE



Fashion has been evolving - right from material production & sourcing, demand & supply patterns, sustainable solutions and more.

At Renuka, our vision goes beyond creating garments—we are committed to building a future where fashion and responsibility coexist. Every piece we manufacture is guided by a deep respect for people, the planet, and the craft of clothing. From responsibly sourced materials to ethical production practices, we strive to deliver not only quality and innovation but also transparency and sustainability at every stage. Our promise is simple: to create garments that reflect integrity, empower communities, and stand the test of time.

FIROZZE KAMAAL ABBASI
DIRECTOR

[LinkedIn](#)



OUR OVERSEAS PARTNERS

T.J. MAXX

ROSS

belk

JCPenney

★ macy's

TILLY'S

derek ♥ heart

PLANET GOLD

Walmart

SUZY
SUZY SHIER

CC
capri collection

imbyM

ABOUT YOU°

RD style

PARAGON
CLOTHING

ARDENE

OUR DOMESTIC PARTNERS

H&M

Latin Quarters


Reliance
Industries Limited

zink
london

COVER/~~STORY~~

So^Whot
s u s t a i n a b l y h o t

LOOKBOOK



Modern silhouettes, sustainable quality, and global trends. Each piece showcases our expertise in premium fabrics, impeccable tailoring, and ethical production, translating fashion-forward concepts into market-ready collections for international clients.





INFRASTRUCTURE

INFRASTRUCTURE

- * Fully integrated garment manufacturing unit, Gurgaon
- * 48+ years of in-house production (no outward processing)
- * Advanced machinery & modern infrastructure
- * Certified: SSI, BSCI (social compliance), LIVA ECO approved

SERVICE & EXPRTISE

- * Product Range: Women's & Men's apparel (woven & knits)
- * Fabric Expertise: Rayon/Viscose, Polyester, Cotton, Denim, Yarn Dyed, Linen, etc.
- * Focus on consistent quality, sustainability & timely delivery
- * Adherence to international standards & client requirements

PEOPLE & CAPACITY

- * Workforce: 500 skilled professionals
- * Monthly Packing Capacity: 75,000 - 90,000 pieces
- * Growing production capacity with planned expansion



MACHINERY

1. Single Needle Machines: 200
2. Double Needle: 02
3. O/Lock: 18 & Flat Lock: 03
4. Edge Cutter: 02
5. Chain Stitch: 02
6. Pressing Table: 20
7. Steam Boiler: 04
8. CAD & Plotter: 01

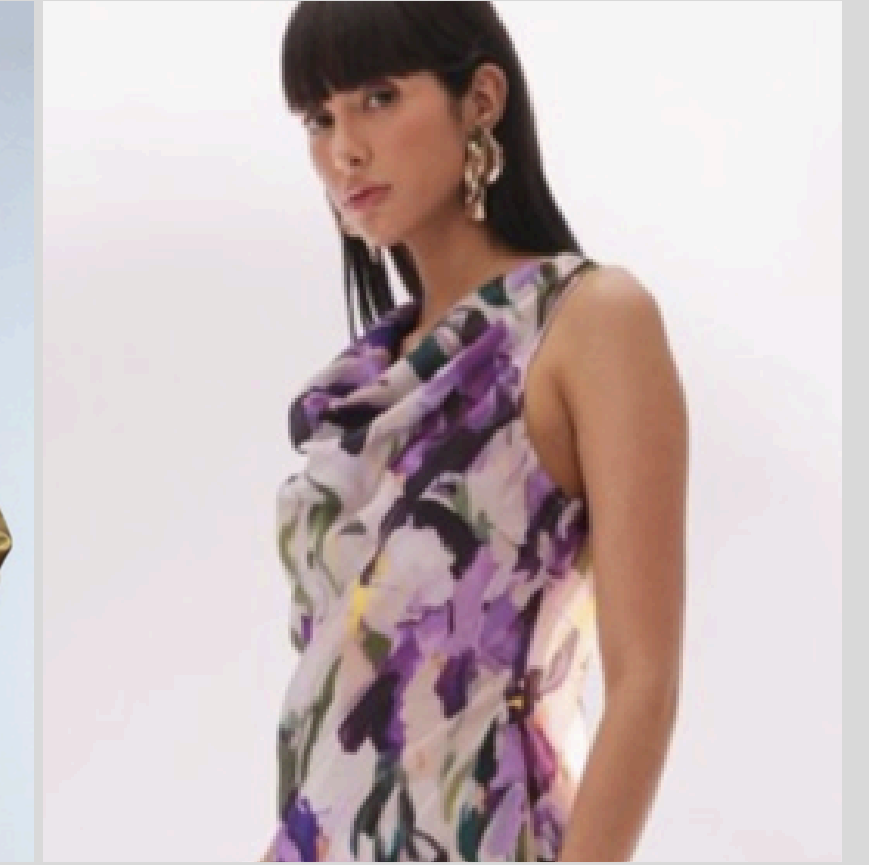
9. Industrial Washing Machine (100 kgs)
10. Hydro: 20 kgs
11. Tumbler: 01 (25 kgs)
12. Cutting Machine: 07
13. Fusing Machine: 02
14. Manual Embroidery Machine 01
15. Power Backup Generator: 02
16. Feed of the arm: 02

NOTE: ALL MACHINES ARE BRANDED: JUKI, BROTHER, Tukatech AND PEGASUS.



WOMEN'S PORT- FOLIO

A curated showcase of elegance, confidence, and individuality. Each portrait blends timeless fashion with modern identity, designed to inspire and connect. The collection highlights versatility, from classic to contemporary, capturing personality and style with authenticity. It celebrates women, making every look both powerful and relatable.





*Knits
Collection*



*Woven
Collection*





*Denim
Collection*





*Denim
Collection*





Denim
Collection





*Denim
Collection*

MEN'S PORT- FOLIO

A modern showcase of style, versatility, and character. Each look highlights confidence and individuality, blending classic menswear with contemporary design. Crafted to inspire, connect, and redefine men's fashion.





*Men's
Collection*





*Men's
Collection*





*Men's
Collection*

THANK YOU

Contact Us

Website

www.renukaexports.com

Email Address

neha@renukaexports.com

Phone Number

+91 9454792779

Designation

Business Development Manager

